

# WALTHER PILOT NORTH AMERICA

## Helps You Successfully Spray in Hard to Reach Locations.

### Nozzle Extensions



**DV 10** - sprays straight ahead  
Nozzle sizes from 0.3 mm - 2.5 mm Ø  
min. inlet opening: Ø 19 mm



**DV 20** - sprays sideways 45°  
Nozzle sizes from 0.3 mm - 2.5 mm Ø  
min. inlet opening: Ø 19 mm



**DV 60** - sprays sideways 45°  
Nozzle sizes from 0.2 mm - 1.5 mm Ø  
min. inlet opening: Ø 36 mm



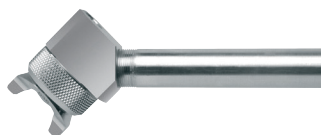
**DV 70** - sprays sideways 90°  
Nozzle sizes from 0.2 mm - 1.5 mm Ø  
min. inlet opening: Ø 48 mm



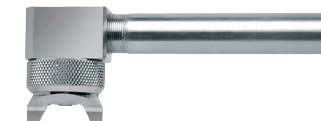
**DV 90** - internal mixing system 360°  
Nozzle size 1.5 mm Ø  
min. inlet opening: Ø 18 mm  
*(not suitable for gravity feed models)*



**DV 30** - sprays straight ahead  
Nozzle sizes from 0.3 mm - 2.2 mm Ø  
min. inlet opening: Ø 34 mm



**DV 40** - sprays sideways 45°  
Nozzle sizes from 0.3 mm - 2.2 mm Ø  
min. inlet opening: Ø 52 mm



**DV 50** - sprays sideways 90°  
Nozzle sizes from 0.3 mm - 2.2 mm Ø  
min. inlet opening: Ø 47 mm



**DV 80** - internal mixing system 360°  
Nozzle size 1.5 mm Ø  
min. inlet opening: Ø 19 mm  
*(not suitable for gravity feed models)*

**Extensions with an 8mm  
outer Ø can be  
manufactured  
by request.**

**For More Information:**  
[www.waltherpilotna.com](http://www.waltherpilotna.com)  
[sales@waltherpilotna.com](mailto:sales@waltherpilotna.com)

### Compact Guns

#### WA 100

- Wide and round-jet are controlled externally.
- Large nozzle size range with only 2 air cap sizes.
- Needle/nozzle are stainless steel.
- Small enough to fit in virtually any space.



**Wide-to-round-jet nozzle inserts available:**  
0.3 / 0.5 / 0.8 / 1.0 / 1.2 / 1.5 / 1.8 / 2.0 / 2.2 mm Ø

#### WA 51

- Stainless steel gun body.
- Needle/nozzle are stainless steel.
- Miniature gun that can fit in very tight spaces.
- Wide and round jet versions available.



**Round-jet nozzle inserts available:**  
0.3 / 0.5 / 0.8 / 1.0 / 1.2 / 1.5 mm Ø

**Wide-jet nozzle inserts available:**  
0.3 / 0.5 / 0.8 / 1.0 / 1.2 / 1.5 mm Ø

### WA 81 - the "Pipe Crawler"

- Spray gun that is designed to coat the interior of pipes.
- Made entirely of stainless steel.
- Stainless steel needle/nozzle.
- Circular spray jet is produced by a special disk nozzle.
- Works with internal mixing.

**Available nozzle sizes:**  
0.5 / 1.0 / 1.5 mm Ø



**WA 81, The "Pipe Crawler"**